

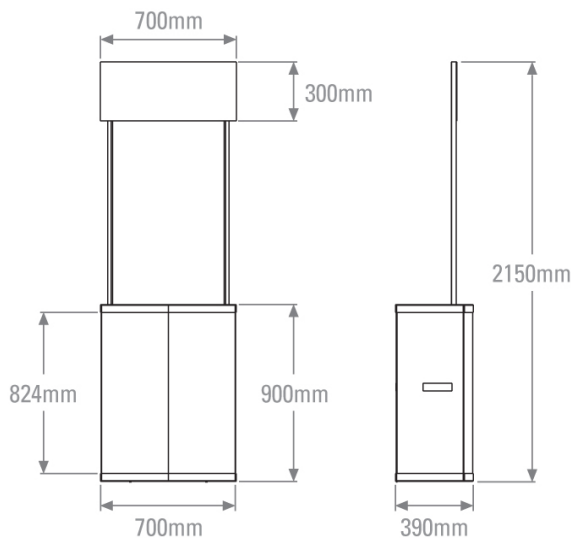
PROMOTION STAND



Lightweight plastic, flat pack promotional unit. Extremely cost effective
Includes rigid header panel, shelf and twin supporting poles.

FEATURES & BENEFITS:

- Lightweight plastic, flat pack promotional unit
- Quick to install
- High visibility with header panel
- Internal shelf to hold samples and literature.



HARDWARE SPECIFICATIONS:
Assembled Dimensions (mm):
2150 (h) x 700 (w) x 390 (d)
Weight:
12.8kg

GRAPHICS SPECIFICATIONS:
Recommended Graphic Dimensions:
900 (h) x 352 (w) Counter Fronts (x2) 900 (h) x 340 (w) Counter Sides (x2) 300 (h) x 700 (w) Header
Visible Graphic Dimensions:
824 (h) x 352 (w) Counter Fronts (x2) 824 (h) x 340 (w) Counter Sides (x2) 300 (h) x 700 (w) Header
Substrate:
Printed on Gloss Vinyl and mounted to the unit.

ADDITIONAL:
Included in kit:
Carry Bag.



Tel: 01773 764288
E-mail: sales@phaseprint.com
www.phaseprint.com

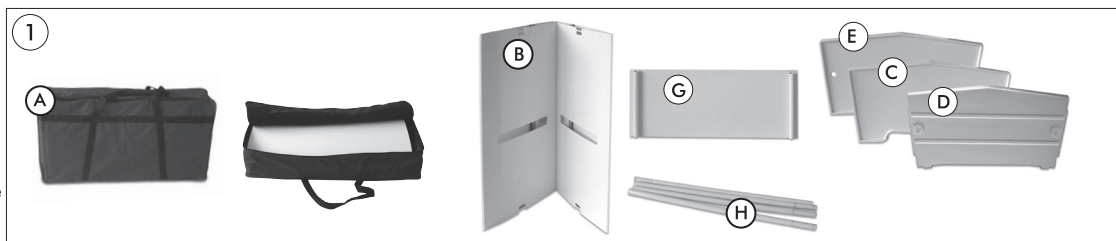
We are continually improving and modifying our product range and reserve the right to vary the specifications without prior notice. All dimensions and weights quoted are approximate and we accept no responsibility for variance. E&OE.



PROMOTION STAND



- A= Bag
B= 1 pc. Body panel
C= 1 pc. Bottom tray
D= 1 pc. Shelf
E= 1 pc. Upper tray
G= 1 pc. Forehead
H= 4 pcs Forehead holder pipe



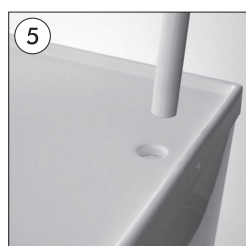
•Fix body panel into the channels on bottom tray.



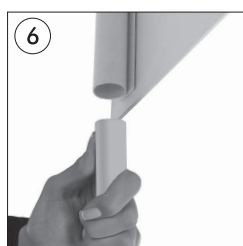
•Fix the shelf on the holder parts in the body panel.



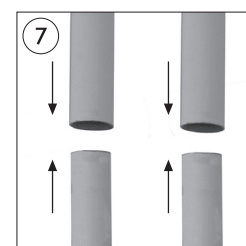
•Put the upper tray on body panel meeting the channels.



•Get through two pipes from upper tray to shelf.



•Place other two pipes at the back of forehead panel.



•Affix the pipes to each other

EXCLUSIVE TO
PHASE

Tel: 01773 764288
E-mail: sales@phaseprint.com
www.phaseprint.com

We are continually improving and modifying our product range and reserve the right to vary the specifications without prior notice. All dimensions and weights quoted are approximate and we accept no responsibility for variance. E&OE.

**DESIGN
PRINT
SIGNAGE**