

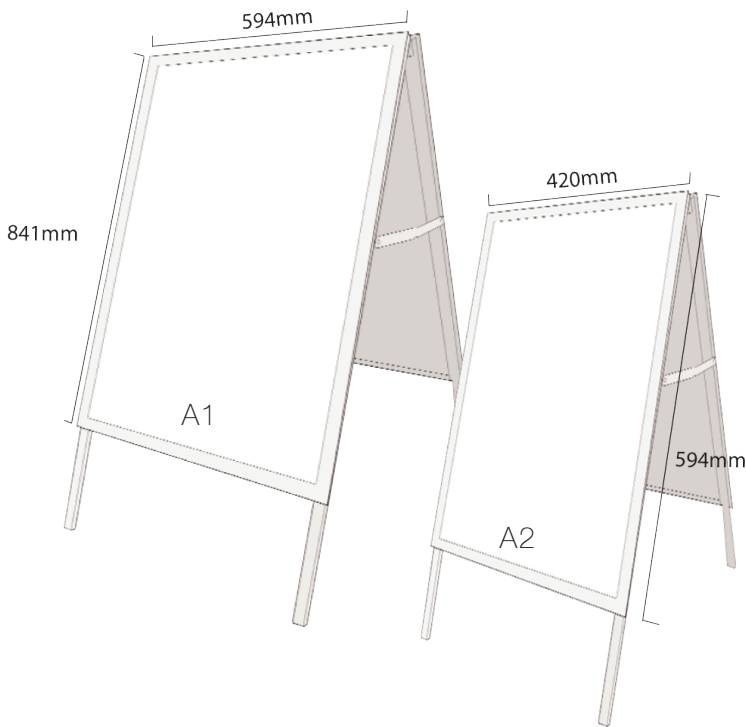
A-BOARD



The A-Master sign board has been specially developed for ease of use using a popular spring loaded Trappa Frame graphic holder.

FEATURES & BENEFITS:

- Easy front-loading, snap frame
- Available in A1 and A2 portrait format
- Complete with UPVC protective graphics cover
- Galvanised steel backing for extra strength and stability



HARDWARE SPECIFICATIONS:
Assembled Dimensions (mm):
1060 (h) x 625 (w) x 670 (d) approx (based upon an A1 A-Board)
Weight:
11kg approx based on an A1

GRAPHICS SPECIFICATIONS:
Maximum Graphic Dimensions (mm):
1189 (h) x 841 (w) [A0 Portrait] 841 (h) x 594 (w) [A1 Portrait] 594(h) x 420(w) [A2 Portrait]
Visible Graphic Dimensions:
1169 (h) x 821 (w) [A0 Portrait] 821 (h) x 574 (w) [A1 Portrait] 574(h) x 400(w) [A2 Portrait]
Substrate:
Single-sided outdoor material, high quality vinyl substrate.

ADDITIONAL:
Included in kit:
Frame, two graphics and two UPVC protective covers
Optional accessories:
Extra graphics, keep your advertisements looking fresh.

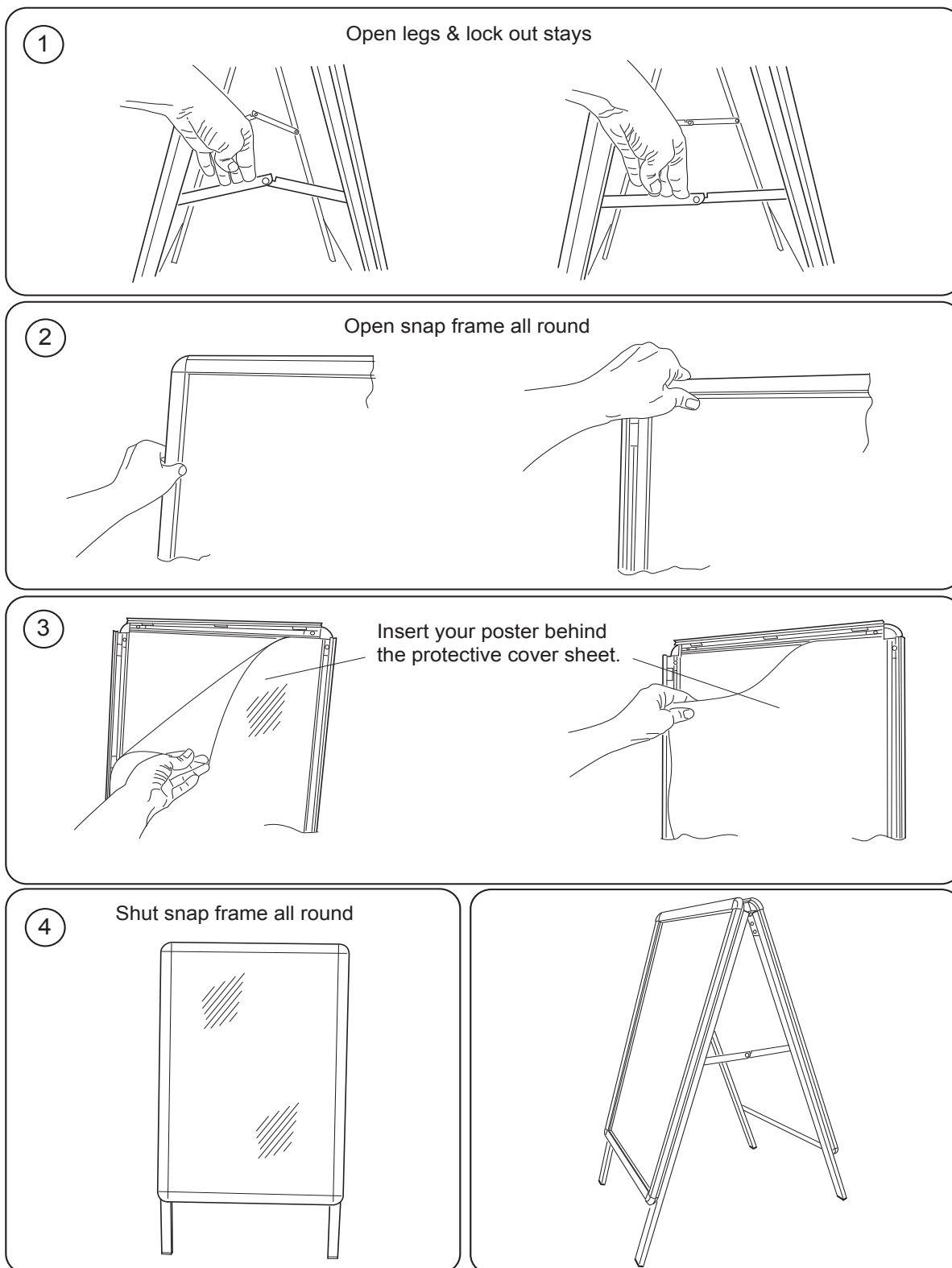


Tel: 01773 764288
E-mail: sales@phaseprint.com
www.phaseprint.com

We are continually improving and modifying our product range and reserve the right to vary the specifications without prior notice. All dimensions and weights quoted are approximate and we accept no responsibility for variance. E&OE.



A-BOARD



EXCLUSIVE TO



Tel: 01773 764288
E-mail: sales@phaseprint.com
www.phaseprint.com

We are continually improving and modifying our product range and reserve the right to vary the specifications without prior notice. All dimensions and weights quoted are approximate and we accept no responsibility for variance. E&OE.

 **DESIGN
PRINT
SIGNAGE**