

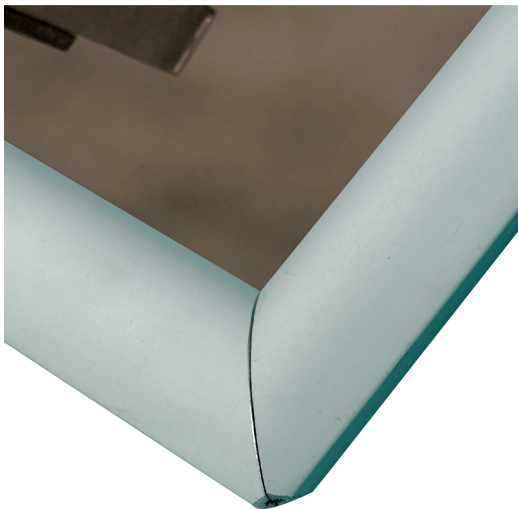
# SNAP FRAMES



Wonderfully quick and easy to use, these front-opening snapframes are operated by hand.

**FEATURES & BENEFITS:**

- Snap opening frames in a satin anodised finish
- Posters are secured by a 25mm snap frame profile
- Available in 5 sizes – A0, A1, A2, A3 and A4
- Single-sided wall mounted display
- Can be fitted landscape or portrait
- Comes complete with protective front cover
- Wall fixings and screws supplied as standard



HARDWARE SPECIFICATIONS:
Assembled Dimensions (mm):
A4 – 246 x 333mm
A3 – 333 x 456mm
A2 – 456 x 630mm
A1 – 630 x 877mm
A0 – 877 x 1225mm
Weight:
1kg approx based on an A1

GRAPHICS SPECIFICATIONS:
Maximum Graphic Dimensions (mm):
A4 – 297 x 210mm
A3 – 420 x 297mm
A2 – 594 x 420mm
A1 – 841 x 594mm
A0 – 1189 x 841mm
Visible Graphic Dimensions:
10mm around all edges is covered by the snapframe mechanism for all sizes

ADDITIONAL:
Included in kit:
Frame, two graphics and two UPVC protective covers
Optional accessories:
Extra graphics, keep your advertisements looking fresh.
Substrate:
Single-sided outdoor material, high quality vinyl substrate.



**Tel:** 01773 764288  
**E-mail:** sales@phaseprint.com  
**www.phaseprint.com**

We are continually improving and modifying our product range and reserve the right to vary the specifications without prior notice. All dimensions and weights quoted are approximate and we accept no responsibility for variance. E&OE.



# A-BOARD

- ① Open snap frame edges



- ② Remove UPVC protective cover



- ③ Remove and replace graphics



EXCLUSIVE TO  
**PHASE**

**Tel:** 01773 764288  
**E-mail:** [sales@phaseprint.com](mailto:sales@phaseprint.com)  
**www.phaseprint.com**

We are continually improving and modifying our product range and reserve the right to vary the specifications without prior notice. All dimensions and weights quoted are approximate and we accept no responsibility for variance. E&OE.

**DESIGN  
PRINT  
SIGNAGE**